

# ARTEMIS

## Technical Specification



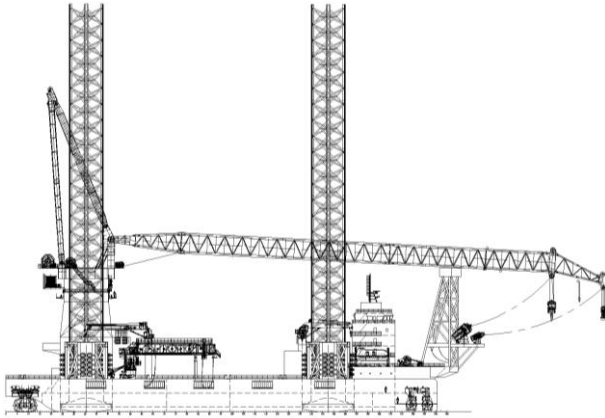
MAIN CRANE CAPACITY	1600 t
ACCOMMODATION	100 POB
MAX WATER DEPTH	70 m
DECK SPACE	3500 m <sup>2</sup>

- ARTEMIS is a four-legged, self-elevating self-propelled jack-up installation vessel, equipped with DP2 capability which allows for fast, safe and cost-efficient transit and positioning in offshore wind project.
- Built to meet American Bureau of Shipping (ABS) classification requirements and compliant with SOLAS SPS and IP Code, making it entirely suitable for unrestricted operation in Taiwanese waters.
- Engineered to endure the demanding offshore environmental conditions of Asia, this jack-up vessel is designed for year-round operation in water depths of up to 70m, ensuring stability, reliability, and efficiency in all seas

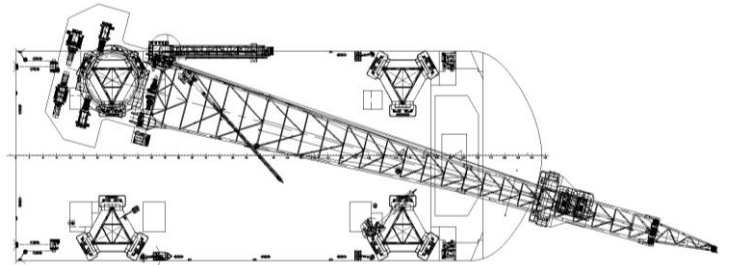
# ARTEMIS

## Jack-Up Installation Vessel

Side view



Top view



### GENERAL

Name	ARTEMIS
Flag	Panama flagged (reflagged to Republic of China)
Port	Kaohsiung
Yard	Dayang Offshore Equipment Co., Ltd
Year of build	2025
Class	✱A1 Self Elevating Unit, ✱AMS, ✱DPS-2, WIND IMR, Accommodation Service, CRC(OC), BWT IHM, CPS, UNRESTRICTED SERVICE
Call Sign	3E9009
IMO number	1034448

### PRINCIPLE DIMENSIONS

Length over all	139.20 m
Length between perpendicular	123.95 m
Beam, moulded	48.00 m
Moulded depth	9.50 m
Design draft	6.50 m
Maximum speed	7.5 knots

### DECK

Capacity	15 t/m <sup>2</sup>
Space	3500 m <sup>2</sup>

### LEGS

Number of legs	4 sets of 3 chord truss type
Type	Triangular truss
Leg length and size	120.0m/ 9.0 m

### POWER GENERATION

Main Generator	6x 2340 eKW, 6.6 kV, 50 Hz
Auxiliary Generator	1x 900 eKW, 400 V, 50 Hz
Emergency Generator	1x 400 eKW, 400 V, 50 Hz

### ACCOMMODATION

Total Complement	100 persons
Cabins	Suite 2, single cabin: 16 twin cabin: 41

### JACKING SYSTEM (Electric Rack & Pinion)

Normal jacking capacity/per pinion	250 t
Storm holding capacity/per pinion	646 t
Jacking speed (hull)	0.45 m/min
Jacking speed (leg)	0.9 m/min

### OPERATING CONDITIONS FOR JACKING

Service Restrictions when Jacking:	
Wind Speed	13.8 m/s
Operational Significant Wave Height	2.0 m
Max. Leg Protrusion	98.0 m
Current	1.03 m/s

### VARIABLE LOAD

Normal Working & Jacking Condition	6500 t
------------------------------------	--------

### PROPLUSION

Dynamis Positioning	DP2
Thrusters	Bow Tunnel: 2 x 2000KW Stern Azimuth: 3 x 2400KW

### MAIN CRANES

Main Hook SWL, elevated	1,600t @ 31 m/1,200t@40m
Main Hook SWL, floating	600t@ 31 m
Auxiliary Hook SWL	350t @75m
Maximum operating wind speed	20 m/s (1 minute mean @ 10m)
Unity Hoist SWL	2 t (man-riding)

### PROVISION CRANES (Telescopic deck mounted)

Lifting hook height: 50m
Capacity: 8t @28m for bow crane, 5t@33m for stern crane

### TANK CAPACITIES

Marine Gas Oil	1100 m <sup>3</sup>
Lube Oil	51 m <sup>3</sup>
Fresh Water	1011 m <sup>3</sup>

### GANGWAY

Type: Telescopic deck mounted	
Working Length	24.5 to 39.5m